

22 METRE COMMERCIAL TRAWLER



117 MARINE TCE (CNR SOUTH ST)
FREMANTLE W.A. 6160
AUSTRALIA

PHONE: +61 (0)8 9336 6664
FAX: +61 (0)8 9336 6665

WEB: www.mmd.net.au

EMAIL: design@mmd.net.au

WHY CHOOSE MMD?

EXPERTISE AND EXPERIENCE
WITH MORE THAN 25 YEARS IN THE INDUSTRY WE HAVE THE KNOWLEDGE AND EXPERIENCE TO COMPLETE YOUR PROJECT.

QUALITY
AS PART OF OUR COMMITMENT TO THE HIGHEST QUALITY SERVICE WE HAVE MAINTAINED OUR CERTIFICATION TO ISO 9001 QUALITY ASSURANCE SINCE 1998

SPEED
TURNAROUND TIMES ARE CRITICAL IN ANY INDUSTRY. WE HAVE THE FLEXIBILITY TO COMMIT RESOURCES AS NECESSARY TO MEET THE MOST DEMANDING DELIVERY SCHEDULE.

SERVICE
AT MMD WE RECOGNIZE THAT YOU ARE THE CUSTOMER. WE ENDEAVOR TO APPLY OUR SKILLS AND KNOWLEDGE TO GIVE YOU WHAT YOU WANT

PRINCIPAL PARTICULARS

Dimension

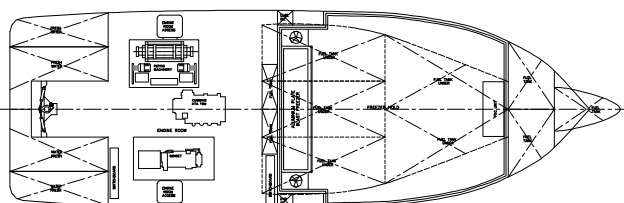
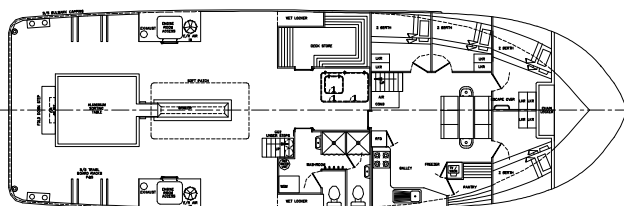
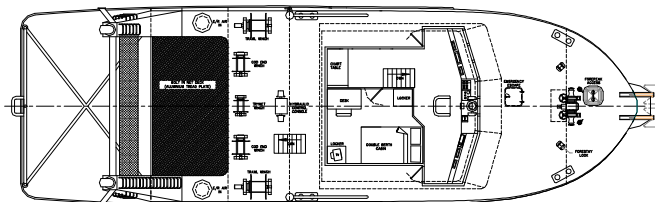
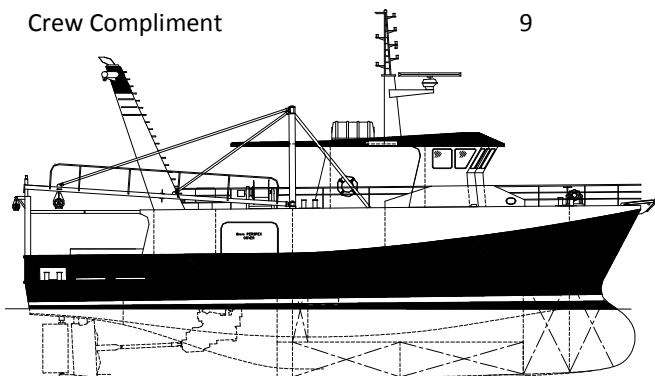
L.O.A	22.00	metres
D.W.L	21.00	metres
Beam	7.00	metres
Nominal Draft	2.43	metres
Survey	USL Class 3B	

Machinery

Engines	1 x Cummins KTA 19M Marine Diesel 298kW @ 1800rpm
Free Running Speed	9.5 knots
Trawl Speed	3.5 knots

Capacities

Fuel Capacity	44000	litres
Fresh Water Capacity	19000	litres
Crew Compliment	9	



ISO 9001
BUREAU VERITAS
Certification

